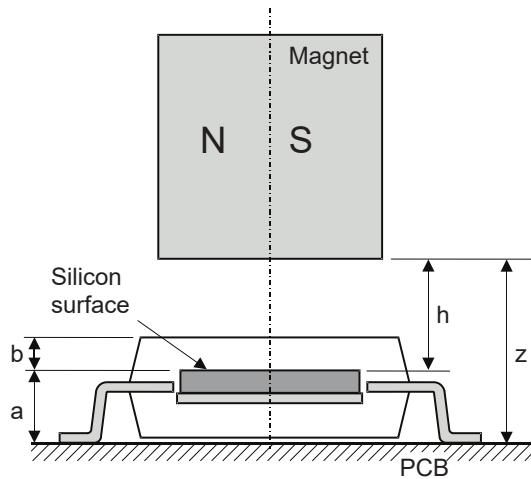


# Installation drawing AM256

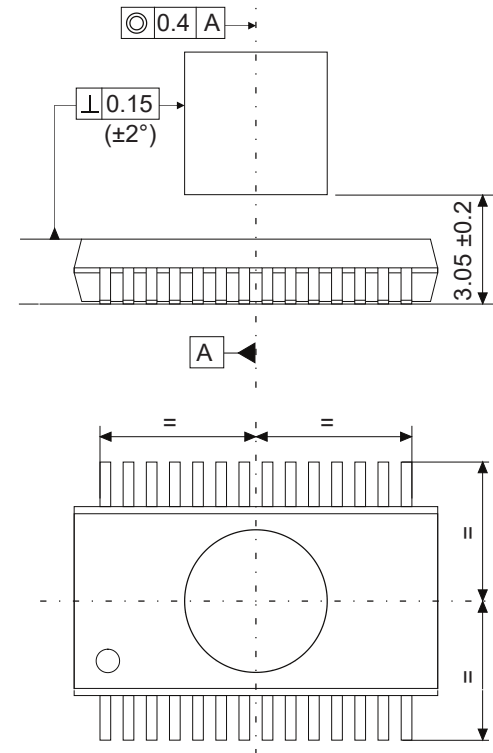


Dimensions and tolerances in mm.

## Magnet position



## Mounting instructions



Parameter	Symbol	Min.	Typ.	Max.	Unit	Note
Distance sensors – PCB plane	a		1.25		mm	
Distance sensors – chip surface	b		0.61		mm	
Distance sensors – magnet	h	1.6	1.80	2.0	mm	For recommended magnet
Distance magnet – PCB plane	z	2.85	3.05	3.25	mm	For recommended magnet