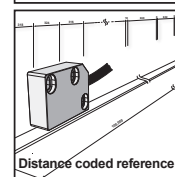
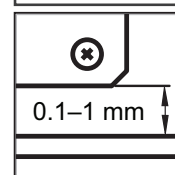


LM13 incremental magnetic encoder system



The LM13 is a contactless high-speed linear magnetic system designed for linear or rotary motion sensing in harsh environments.

The system consists of a compact readhead and a separate self-adhesive magnetic scale or ring.

Simple to install, the LM13 features an integral set-up LED on the readhead, wide installation tolerances and an applicator tool for the adhesive-backed magnetic scale. A bidirectional reference is provided that can be actuated either by a preset mark integrated within the scale or ring or by adding a reference sticker on top of the scale with the help of a self-aligning installation tool.

The encoders come with a range of digital or analogue output variants and offer a range of customer selectable resolutions from 0.244 μm to 250 μm .

Maximum speed depends on the chosen resolution and minimum

edge separation time; eg. for linear applications to 7 m/s at 1 μm and to 75 m/s at 10 μm . For more information about maximum speed in rotary applications go to [magnetic ring data sheet](#).

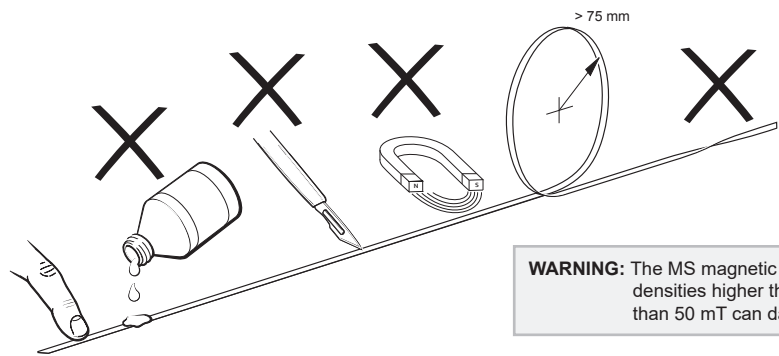
Engineered for extreme service, the solid-state LM13 linear encoder operates from $-10\text{ }^{\circ}\text{C}$ to $+80\text{ }^{\circ}\text{C}$, sealing to IP68 and is highly resistant to shock, vibrations and pressure. The robust magnetic scale and ring are also resistant to a range of chemicals commonly found in industry.

The non-contact, frictionless design eliminates wear while reducing hysteresis.

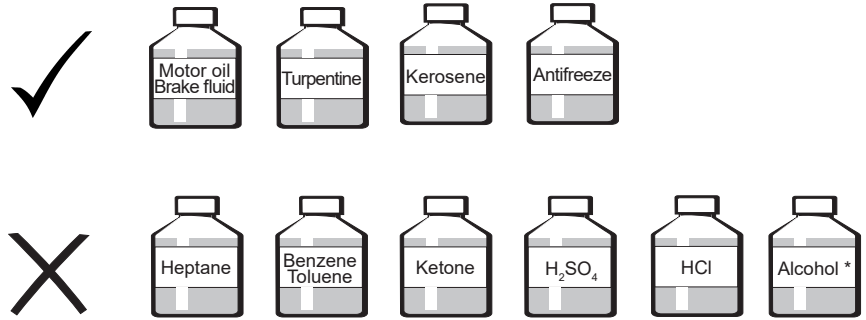
The LM13 linear encoder system brings reliable solutions to tough, hard-working applications including woodworking, stone-cutting, sawing, metalworking, textiles, printing, packaging, plastics processing, automation and assembly systems, laser/flame/water-jet cutting, electronic assembly equipment etc.

- Compact readhead
- Bidirectional reference mark option
- High speed operation
- Excellent dirt immunity
- Integral set-up LED
- Linear or rotary position sensing possible
- High reliability from proven non-contact sensing technology
- Industry standard digital and analogue output options
- Repeatability inside resolution
- CE compliant, including RoHS - see Declaration of conformity

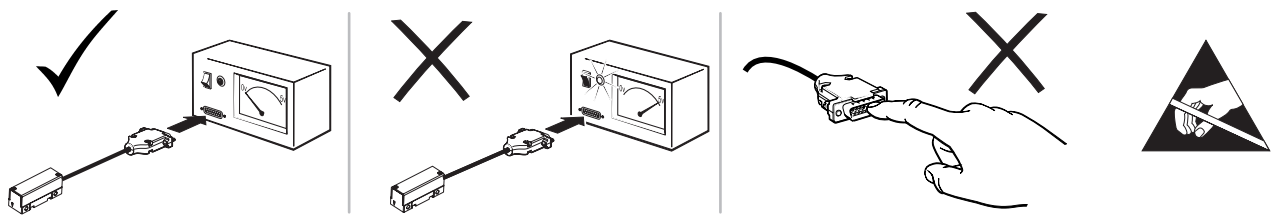
Storage and handling



WARNING: The MS magnetic scale should not be exposed to magnetic field densities higher than 50 mT on its surface. Magnetic fields higher than 50 mT can damage the scale.

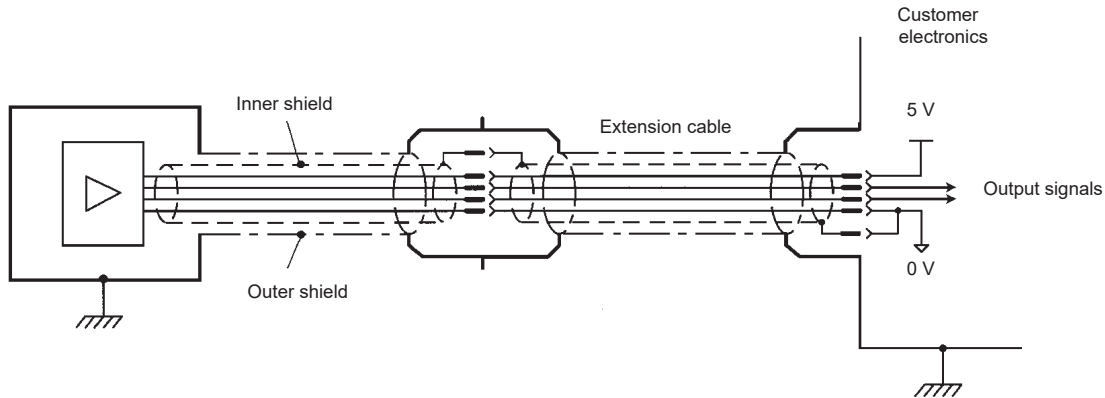


* Use of alcohol for cleaning is considered safe, however, it is not allowed to immerse the scale in alcohol.



For radial and axial ring storage and handling refer to [magnetic ring data sheet](#).

Electrical connections



Technical specifications

System data											
Maximum measuring length of MS scale			50 m (100 m special order)								
Pole length			2 mm								
For rotary maximum speed table refer to magnetic ring data sheet . Available resolutions and maximum speed for linear application:											
For analogue voltage output: 20 m/s (for spec. option 20 max. speed is 80 m/s) For digital output signals:											
Part numbering	Resolution (µm)	Counts / 2 mm	Maximum speed (values in grey for special option 20) (m/s)								
13B	≈ 0.244	8,192	1.82	0.91	0.23	0.11	0.06	0.03	0.02	0.01	0.01
12B	≈ 0.488	4,096	3.65	1.82	0.46	0.23	0.12	0.06	0.05	0.02	0.01
11B	≈ 0.976	2,048	7.30	3.65	0.91	0.46	0.24	0.12	0.10	0.05	0.02
2D0	1	2,000	7.47	3.73	0.93	0.47	0.24	0.12	0.10	0.05	0.02
1D6	1.25	1,600	9.33	4.67	1.17	0.58	0.30	0.16	0.12	0.06	0.03
10B	≈ 1.953	1,024	14.58	7.30	1.82	0.91	0.48	0.24	0.19	0.10	0.05
1D0	2	1,000	14.93	7.47	1.87	0.93	0.49	0.25	0.20	0.10	0.05
D80	2.5	800	18.67	9.33	2.34	1.17	0.61	0.31	0.25	0.12	0.06
09B	≈ 3.906	512	20 / 29.17	14.58	3.65	1.82	0.95	0.49	0.38	0.19	0.10
D50	4	500	20 / 29.87	14.93	3.73	1.87	0.97	0.50	0.39	0.20	0.10
D40	5	400	20 / 37.33	18.67	4.67	2.34	1.22	0.62	0.49	0.25	0.12
D32	6.25	320	20 / 46.67	20 / 23.33	5.84	2.91	1.52	0.78	0.61	0.31	0.16
08B	≈ 7.812	256	20 / 58.34	20 / 29.17	7.30	3.65	1.90	0.97	0.77	0.39	0.19
D20	10	200	20 / 74.67	20 / 37.33	9.33	4.67	2.43	1.24	0.98	0.50	0.25
D16	12.5	160	20 / 46.67	20 / 23.33	5.84	2.91	1.52	0.78	0.61	0.31	0.16
07B	15.625	128	20 / 80	20 / 58.34	14.58	7.30	3.81	1.94	1.53	0.77	0.39
D10	20	100	20 / 74.67	20 / 37.33	9.33	4.67	2.43	1.24	0.98	0.50	0.25
D08	25	80	20 / 46.67	20 / 23.33	5.84	2.91	1.52	0.78	0.61	0.31	0.16
06B	31.25	64	20 / 80	20 / 80	20 / 29.17	14.58	7.62	3.89	3.07	1.55	0.78
D04	50	40	20 / 46.67	20 / 23.33	5.84	2.91	1.52	0.78	0.61	0.31	0.16
05B	62.5	32	20 / 80	20 / 80	20 / 58.34	20 / 29.17	15.22	7.78	6.14	3.10	1.56
04B	125	16	N/A	20 / 80	20 / 80	20 / 58.34	20 / 30.43	15.56	12.28	6.19	3.11
03B	250	8	N/A	N/A	20 / 80	20 / 80	20 / 60.86	20 / 31.11	20 / 24.56	12.39	6.23
Minimum edge separation (µs)			0.07	0.13	0.50	1	2	4	5	10	20
Maximum count frequency (MHz)			15	8	2	1	0.5	0.25	0.2	0.1	0.05
Part numbering			K	A	B	C	D	E	F	G	H
Accuracy grade for MS scales											
			±10 µm (available for lengths up to 20 m only), ±20 µm and ±40 µm								
Linear expansion coefficient of MS scale											
			~ 17 × 10 ⁻⁶ /K								
Repeatability											
			Better than unit of resolution for movement in the same direction								
Hysteresis											
			< 4 µm up to 0.5 mm ride height								
Mechanical data											
Mass			Readhead (1 m cable, no connector) 80 g, Cable (1 m) 34 g Magnetic scale (1 m) 60 g, Cover foil (1 m) 3.5 g								
Environmental data											
Temperature			Operating	−10 °C to +80 °C (cable under non-dynamic conditions: −20 °C to +85 °C)							
			Storage	−40 °C to +85 °C							
Environmental sealing			IP68 (according to IEC 60529)								
EMC Immunity			IEC 61000-6-2 (particularly: ESD: IEC 61000-4-2; EM fields: IEC 61000-4-3; Burst: IEC 61000-4-4; Surge: IEC 61000-4-5; Conducted disturbances: IEC 61000-4-6; Power frequency magnet fields: IEC 61000-4-8; Pulse magnetic fields: IEC 61000-4-9)								
EMC Interference			IEC 61000-6-4 (for industrial, scientific and medical equipment: IEC 55011)								
Vibrations (55 Hz to 2000 Hz)			300 m/s ² (IEC 60068-2-6)								
Shocks (11 ms)			300 m/s ² (IEC 60068-2-27)								

Cable specifications

Cable type	PUR high flexible cable, drag-chain compatible, double-shielded	
Number of wires	8	12
Outer diameter	4.2 mm ± 0.2 mm	4.5 mm ± 0.2 mm
Jacket material	Extruded polyurethane (PUR)	
White wire	0.14 mm ² , 26 AWG, 0.13 Ω /m	0.08 mm ² , 28 AWG, 0.23 Ω /m
Other wires	0.05 mm ² , 30 AWG, 0.35 Ω /m	
Durability	20 million cycles at 25 mm bend radius	20 million cycles at 50 mm bend radius
Weight	34 g/m nominal	38 g/m nominal
Bend radius (internal radius)	Dynamic 25 mm, static 10 mm	Dynamic 50 mm, static 10 mm

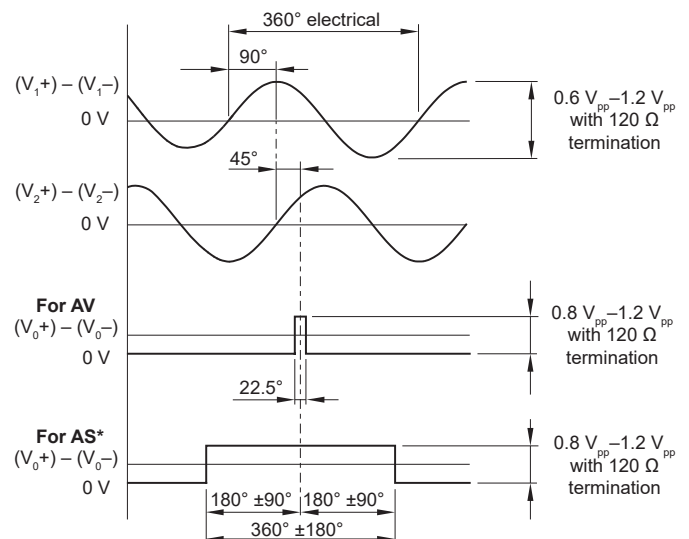
Output specifications

LM13AV and LM13AS* – Incremental analogue output signals (1 V_{pp})

2 channels V₁ and V₂ differential sinusoidals (90° phase shifted)

Power supply **	4.7 V to 7 V – voltage on readhead Reverse polarity protection	
Power consumption	< 50 mA	
Voltage drop over cable	~ 13 mV/m – without load ~ 54 mV/m – with 120 Ω load	
Output signals	V ₁ , V ₂ , V ₀	
Sine / cosine signals	Amplitude (with 120 Ω termination)	0.6 V _{pp} to 1.2 V _{pp}
	Phase shift	90° $\pm 0.5^\circ$
Reference signal	Amplitude (with 120 Ω termination)	0.8 V _{pp} to 1.2 V _{pp}
	Position	45°
	Width	22.5° for AV output 360° $\pm 180^\circ$ for AS* output
Termination	Z ₀ = 120 Ω between associated outputs	
Cable length **	Max. 50 m	

Timing diagram



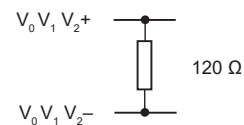
* AS output type is compatible with controllers (eg. Siemens, Fanuc) with 1 V_{pp} encoder inputs.

AS output type cannot be used with stick-on reference or cut reference mark.

AS output type has limitations in sensing distance (ride height), lateral offset and roll (see page 3).

** Please consider voltage drop over cable.

Recommended signal termination



Connections

Function	Signal	Colour (option F)	15 pin D type plug (option L)	9 pin D type plug (option A)	9 pin D type plug (option P)
Power	5 V	Brown	4	5	5
	0 V	White	12	9	1
Analogue signals	V ₁	Green	9	4	2
	V ₁ -	Yellow	1	8	6
	V ₂	Blue	10	3	4
	V ₂ -	Red	2	7	8
Reference signals	V ₀	Pink	3	2	3
	V ₀ -	Grey	11	6	7
Shield	Inner	–	15	1	9
	Outer	–	Case	Case	Case

LM13IC – Digital output signals, RS422

Square wave differential line driver to RS422

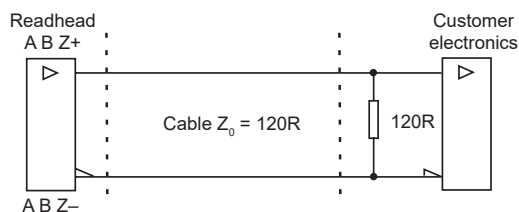
Power supply *	4.7 V to 7 V – voltage on readhead Reverse polarity protection
Power consumption	< 35 mA
Voltage drop over cable	~ 13 mV/m – without load ~ 54 mV/m – with 120 Ω load
Power supply rise time	< 1 ms (for PRG option only)
Response time **	< 100 ms < 10 μ s (special option 02)
Output signals	3 square-wave signals A, B, Z and their inverted signals A–, B–, Z–
Reference signal	1 or more square-wave pulse Z and its inverted pulse Z–
Signal level	Differential line driver to EIA standard RS422: $U_H \geq 2.5$ V at $-I_H = 20$ mA $U_L \leq 0.5$ V at $I_L = 20$ mA

Permissible load	$Z_0 \geq 100 \Omega$ between associated outputs $I_L \leq 20$ mA max. load per output Capacitive load ≤ 1000 pF Outputs are protected against short circuit to 0 V and to +5 V Only one output shorted at a time
Alarm	High impedance on output lines A, B, A–, B– Special option 02: Alarm is not signalled by high impedance state ** Special option 07: Alarm signal is output parallel as line driver signal
Switching time (10 to 90 %)	t_+ , $t_- < 30$ ns (with 1 m cable and recommended input circuit)
Cable length *	Max. 100 m

* Please consider voltage drop over cable.

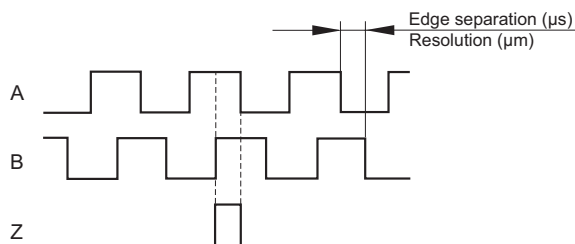
** See description on page 8.

Recommended signal termination



Timing diagram

Complementary signals not shown



Connections

Function	Signal	Colour (option F)	15 pin D type plug (option D)	9 pin D type plug (option A)	15 pin HD type plug (option H)	9 pin CPC connector (option E)
Power	5 V	Brown	7	5	7	8
	0 V	White	2	9	2	7
Incremental signals	A	Green	14	4	14	1
	A–	Yellow	6	8	6	4
	B	Blue	13	3	13	2
	B–	Red	5	7	5	5
Reference signals	Z	Pink	12	2	12	3
	Z–	Grey	4	6	4	6
Alarm	E	Violet	11	–	11	–
	E–	Black	3	–	3	–
Shield	Inner	–	15	1	15	7
	Outer	–	Case	Case	Case	9

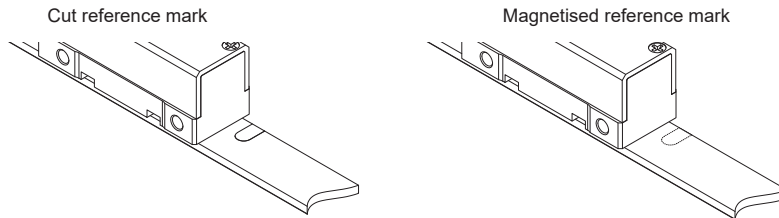
Programming (for IC output only)

Readheads can be ordered preset to the required resolution or provided so that they can be programmed as needed on the machine to the chosen resolution. This programming is carried out by connecting the readhead to a computer via a programming interface. The readhead must be ordered with the PRG resolution option to use this function. For more information on the programming function of LM13 readheads, please refer to the [UPRG01 programming interface datasheet](#).

Reference mark

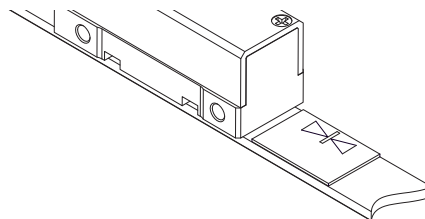
Reference marks can be provided in 4 ways:

- 1) **Selected at point of order.** The LM13 readhead should be ordered with reference mark option A. Magnetic scale or ring should be ordered with reference mark. For scales with magnetised reference mark an additional letter M should be added to the end of the part numbering. If required, the cover foil can be installed over reference marks.



NOTE: The shape and position of the cut or magnetised reference are critical so these options are only available as factory order.

- 2) **Stick-on reference mark.** The LM13 readhead should be ordered with reference mark option A. Magnetic scale should be ordered with **no** reference mark. After installation of the scale and optionally cover foil a reference mark sticker can be applied at the required position using the reference mark applicator tool. Ensure that the reference sticker is oriented to the corresponding side of the readhead as shown on the drawing below.



NOTE: Not available for magnetic rings.

Part numbering: LM10SRM00

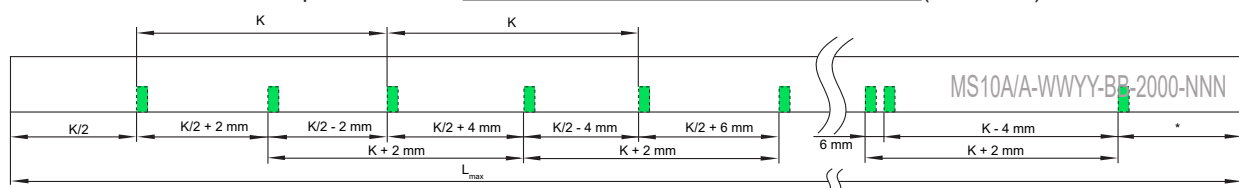
- 3) **Tool for custom selectable reference mark.** The LM13 readhead should be ordered with reference mark option A. Magnetic scale should be ordered with **no** reference mark. Operator can magnetise reference mark in a position to suit the application.



Part numbering: LM10CRM00

- 4) **Periodic reference impulse. Every 2 mm.** The LM13 readhead should be ordered with reference mark option C. Magnetic scale or ring should be ordered with **no** reference mark. Position information is output in incremental quadrature format with periodic reference impulses. Reference periods correspond to pole length of magnetisation.

Distance coded reference marks. The LM13 readhead should be ordered with reference mark option A. The distance coded reference mark option provides multiple reference marks that are individually spaced according to specific mathematical algorithm. Absolute position is calculated after traversing 2 successive reference marks. Maximum length and minimum traverse depend on basic spacing (K) between reference marks, which is customer selectable at point of order. For further information please refer to [Distance coded reference mark data sheet \(LM10D17\)](#).



* Depends on magnetic scale length.

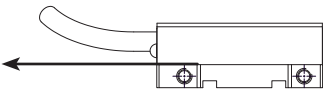
Multiple reference marks. For cut reference marks on multiple locations on the MS magnetic scale please [contact RLS](#) for a special part numbering.

For radial and axial ring references refer to [magnetic ring data sheet](#).

Positive direction

Digital output signals – A leads B

Analogue output signals (1 V_{pp}) – V_1 leads V_2



Status LED

After the installation of the magnetic scale or ring ([see MS magnetic scale installation guide for LM10 and LM15 readheads](#)) the readhead can be easily adjusted on the machine using the set-up LED indicator. When special option 07 (additional alarm outputs) is selected status of LED is available also by additional lines (HI = green LED, LO = red LED).

LED	Status	Possible reason
Green	Good signal strength/set-up	-
Red	Poor signal strength - adjustment required A, B, A-, B- become high impedance	Incorrect readhead orientation. Readhead installation out of tolerance.
Red/green flashing	IC, IC_02: poor signal strength	Demagnetisation of measuring scale or ring. Insufficient power supply voltage.

Response time

	LM13AV/AS	LM13IC_02	LM13IC
Set-up time	10 ms		
Conversion time	<250 ns		
Transition time	<10 μ s		<100 ms

Set-up time is the time needed for the encoder readhead to start reading the position information after power-on (see diagram 1).

Conversion time is the time needed for the encoder readhead to convert the position information into an output signal.

Transition time is the time it takes the encoder readhead to switch from an alarm state to a valid output signal (see diagram 2).

Diagram 1: Set-up time

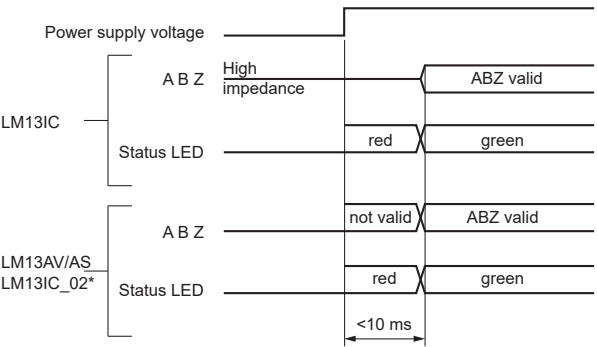
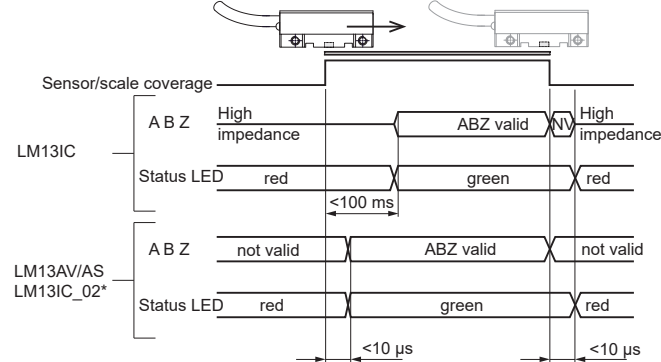


Diagram 2: Transition time



* In alarm state LED flashes red/green.

Readhead part numbering



LM13 system

=



LM13 readhead
eg. LM13IC2D0CA10F00

+



Magnetic scale / ring
eg. MS10BM100A0000 for scale /
MR047B040B076B00 for ring

LM13 IC 2D0 C A 10 F 00

Output type

AS - Analogue voltage $1V_{pp}$, wide reference pulse, 5 V⁶
AV - Analogue voltage, $1V_{pp}$, 5 V
IC - Incremental, RS422; 5 V

Interpolation factor

For **AS** and **AV**: **000** - N/A

For **IC**:

13B - 8192 (0.244 μm)	09B - 512	D10 - 100 (20 μm)
12B - 4096 (0.488 μm)	D50 - 500 (4 μm)	D08 - 80 (25 μm)
11B - 2048	D40 - 400 (5 μm)	06B - 64
2D0 - 2000 (1 μm)	D32 - 320	D04 - 40 (50 μm)
1D6 - 1600	08B - 256	05B - 32
10B - 1024	D20 - 200 (10 μm)	04B - 16 (125 μm)
1D0 - 1000 (2 μm)	D16 - 160	03B - 8 (250 μm)
D80 - 800	07B - 128	

PRG - Programmable, preset to 1 μm (for **IC** only)

For resolutions in μm see table on page 4.

Minimum edge separation

For **AS** and **AV**: **A** - N/A

For **IC**:

K - 0.07 μs (15 MHz)¹
A - 0.12 μs (8 MHz)²
B - 0.5 μs (2 MHz)
C - 1 μs (1 MHz)
D - 2 μs (0.5 MHz)
E - 4 μs (0.25 MHz)
F - 5 μs (0.2 MHz)
G - 10 μs (0.1 MHz)
H - 20 μs (0.05 MHz)

Special requirements

00 - No special requirements (standard)
02 - Shortened reaction time (for **IC**; not available for **PRG** option)
07 - Additional alarm output (for **IC**; not available for **PRG** option)
20 - High speed version (only available for certain resolutions and frequencies; see page 4)
0M - Cable length in meters

Connector option

A - 9 pin D type plug⁵
D - 15 pin D type plug (for **IC**)
E - 9 pin CPC connector (for **IC**)
F - Flying lead (no connector)³
H - 15 pin HD type plug (for **IC**)
L - 15 pin D type plug (for **AV** and **AS**)
P - 9 pin D type plug (for **AV** and **AS**)

Cable length

10 - 1.0 m (standard)
(eg. 13 - 1.3 m cable and
13 - 13 m cable if special option **0M** is chosen)

Reference

A - With reference sensor¹
B - No reference sensor⁴
C - Periodic reference impulse as per scale pitch (every 2 mm)⁴

¹ Not available with 03B and 04B interpolation factors.

² Default for **PRG** option; not available with 03B interpolation factor.

³ The **PRG** option comes with a plastic connector.

⁴ Not available with **AS** output type.

⁵ Not available with special option 07.

⁶ Magnetic scale must be ordered with magnetised reference mark.

Formula for linear application resolution

$$\text{Resolution } (\mu\text{m}) = \frac{2000}{\text{Interpolation}}$$

Formula for rotary application resolution

$$\text{Resolution (ppr)} = \frac{\text{cpr}}{4}$$

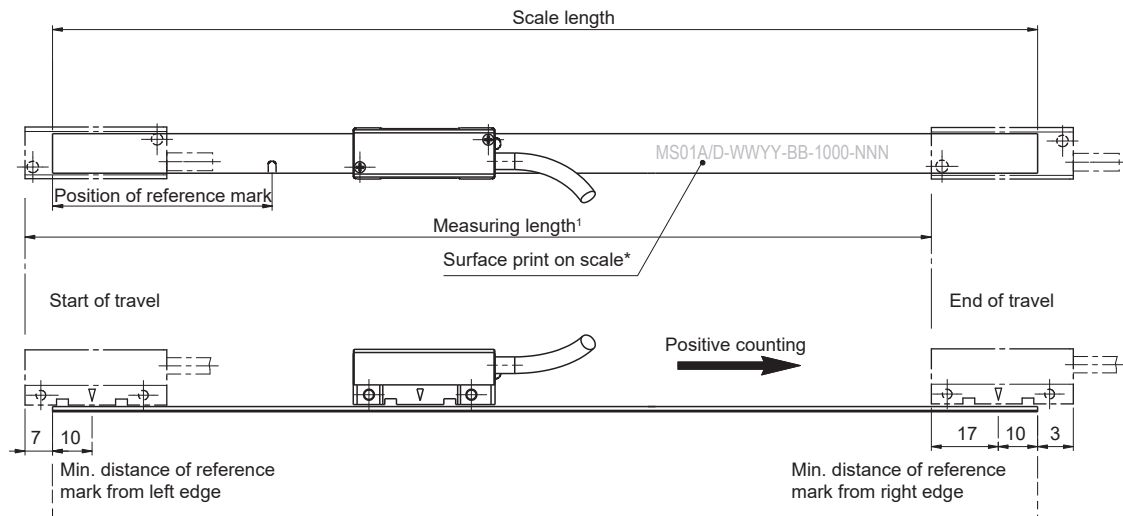
$$\text{Resolution (cpr)} = \text{Pole number} \times \text{Interpolation}$$

For radial and axial ring part numbering refer to [magnetic ring data sheet](#).

Series	Output type	Interpolation factor	Minimum edge separation	Reference	Cable length	Connector option	Special requirements
LM13	IC	PRG	A	A / C	10	A / D / E / H / F	00 / 05 / 0M / 02 / 07 / 20
		13B / 12B / 11B / 2D0 / 1D6 / 10B / 1D0 / D80 / 09B / D50	K / A / B / C / D / E / F / G / H	B			
				A / C			
				B			
				A / C			
		D40 / D32 / 08B / D20 / D16 / 07B / D10 / D08 / 06B / D04 / 05B	A / B / C / D / E / F / G / H	B			
				C			
		04B	A / B / C / D / E / F / G / H	B			
	AV AS	000	A	C		A / L / P / F	00 / 05 / 0M / 20
				B			
				A / C			
				A			

Diagram for magnetic scale ordering

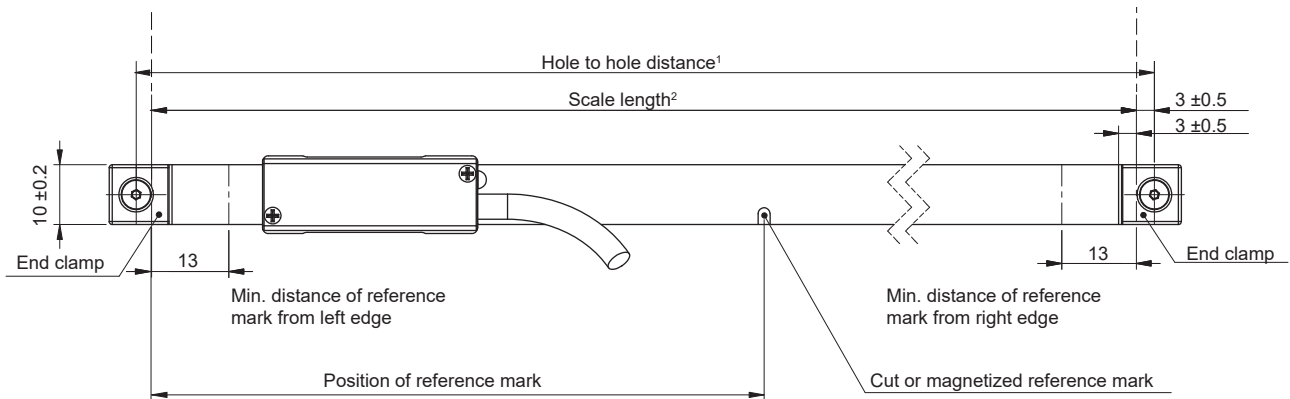
Dimensions in mm.



¹ Measuring length = Scale length - 20 mm

* Scale markings are shown for orientation purpose only. The markings do not represent the actual part numbering.

Magnetic scale with ends prepared for end clamping (options C and P)

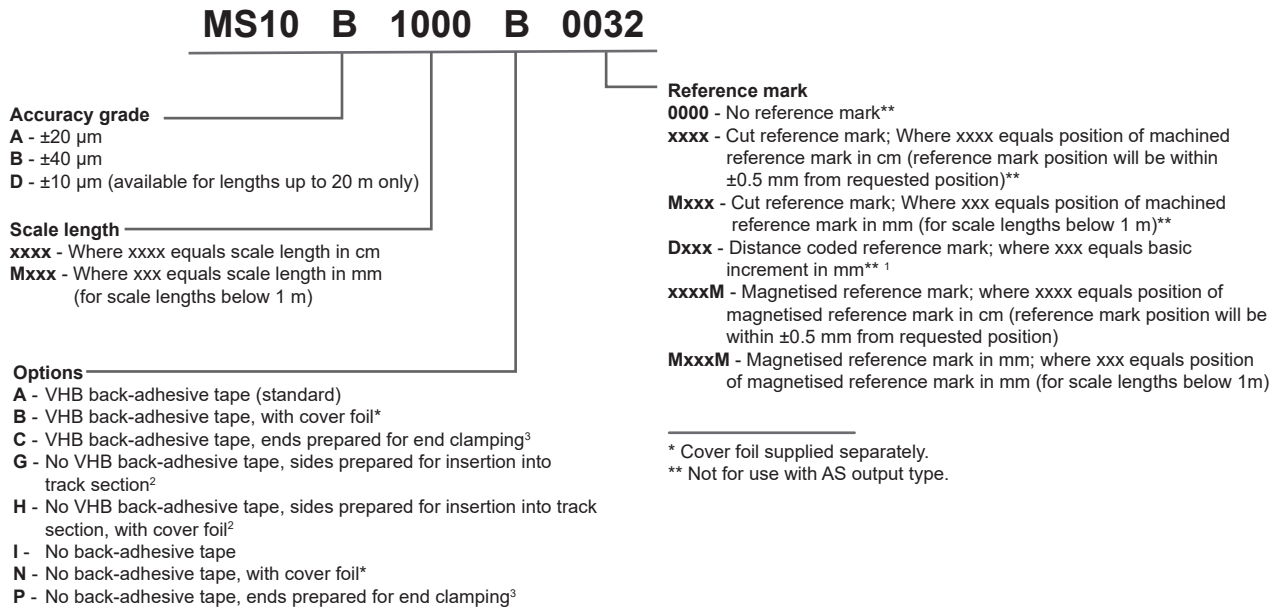


¹ Hole to hole distance = Scale length + 6 ± 1 mm (for end clamp mounting)

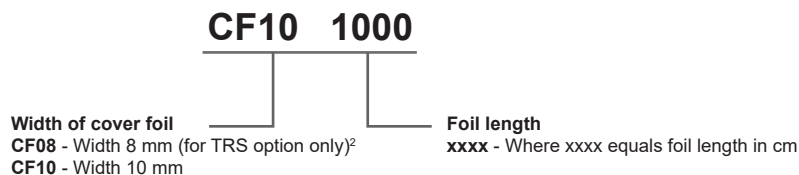
² Measuring length with end clamps = Scale length - 26 mm

Magnetic scale part numbering

Please refer to diagram for magnetic scale on page 11.



Cover foil part numbering



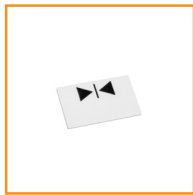
¹ For details on DCRM system please refer to data sheet LM10D17 on www.rls.si/lm10.

² For details on TRS system please refer to data sheet LM10D18 on www.rls.si/trs.

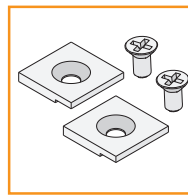
³ For details on end clamp installation please refer to data sheet LM10D14 on www.rls.si/lm10.

For radial and axial ring part numbering refer to [magnetic ring data sheet](#).

Accessories part numbering



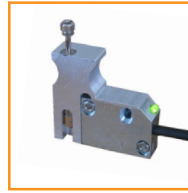
Stick-on reference mark
LM10SRM00



End clamp kit
(2 clamps + 2 screws)
LM10ECL00



Applicator tool for stick-on
reference mark
LM10ARM00



Tool for custom selectable
reference mark
LM10CRM00



Applicator tool for magnetic
scale and cover foil
LM13ASC00



Programmable interface
UPRG01



USB encoder interface
E201



Magnet viewer
MM0001

Accessories for MS Track System



Track section, 1.00 m
TRS100A00



Track section, 2.00 m
TRS200A00



Scale clamp, 0.04 m
TRE004A00



Joining element, 0.04 m
TRE004A01



Screw and washer
TRC00

Head office

RLS merilna tehnika d.o.o.

Poslovna cona Žeje pri Komendi
Pod vrbami 2
SI-1218 Komenda
Slovenia

T +386 1 5272100

F +386 1 5272129

E mail@rls.si

www.rls.si

Document issues

Issue	Date	Page	Corrections made
5	16. 5. 2018	1, 2, 4, 11-13	Ring reference added
		3, 4, 5	Cable specifications amended
		8	9-pin CPC connector added
		11, 12	Readhead part numbering amended
		13	Magnetic scale part numbering amended

This product is not designed or intended for use outside the environmental limitations and operating parameters expressly stated on the product's datasheet. Products are not designed or intended for use in medical, military, aerospace, automotive or oil & gas applications or any safety-critical applications where a failure of the product could cause severe environmental or property damage, personal injury or death. Any use in such applications must be specifically agreed to by seller in writing, and is subject to such additional terms as the seller may impose in its sole discretion. Use of products in such applications is at buyer's own risk, and buyer will indemnify and hold harmless seller and its affiliates against any liability, loss, damage or expense arising from such use. Information contained in this datasheet was derived from product testing under controlled laboratory conditions and data reported thereon is subject to the stated tolerances and variations, or if none are stated, then to tolerances and variations consistent with usual trade practices and testing methods. The product's performance outside of laboratory conditions, including when one or more operating parameters is at its maximum range, may not conform to the product's datasheet. Further, information in the product's datasheet does not reflect the performance of the product in any application, end-use or operating environment buyer or its customer may put the product to. Seller and its affiliates make no recommendation, warranty or representation as to the suitability of the product for buyer's application, use, end-product, process or combination with any other product or as to any results buyer or its customer might obtain in their use of the product. Buyer should use its own knowledge, judgment, expertise and testing in selecting the product for buyer's application, end-use and/or operating environment, and should not rely on any oral or written statement, representation, or samples made by seller or its affiliates for any purpose. EXCEPT FOR THE WARRANTIES EXPRESSLY SET FORTH IN THE SELLER'S TERMS AND CONDITIONS OF SALE, SELLER MAKES NO WARRANTY EXPRESS OR IMPLIED WITH RESPECT TO THE PRODUCT, INCLUDING ANY WARRANTY OF MERCHANTABILITY OR FITNESS FOR ANY PARTICULAR PURPOSE, WHICH ARE DISCLAIMED AND EXCLUDED. All sales are subject to seller's exclusive terms and conditions of sale which, where the seller is (a) RLS merilna tehnika d.o.o., are available at <https://www.rls.si/customer-service>, (b) Renishaw, Inc., are available at <http://www.renishaw.com/Shop/legal/en/-42186>, or (c) another person, are available on request, and in each case, are incorporated herein by reference, and are the exclusive terms of sale. No other terms and conditions apply. Buyer is not authorized to make any statements or representations that expand upon or extend the environmental limitations and operating parameters of the products, or which imply permitted usage outside of that expressly stated on the datasheet or agreed to in writing by seller.

RLS merilna tehnika d.o.o. has made considerable effort to ensure the content of this document is correct at the date of publication but makes no warranties or representations regarding the content. RLS merilna tehnika d.o.o. excludes liability, howsoever arising, for any inaccuracies in this document. © 2018 RLS d.o.o.